

RETAIL / FLEX BUILDINGS FOR LEASE TOTALLING 28,367 SF

# 147-151 SAMOSET ST

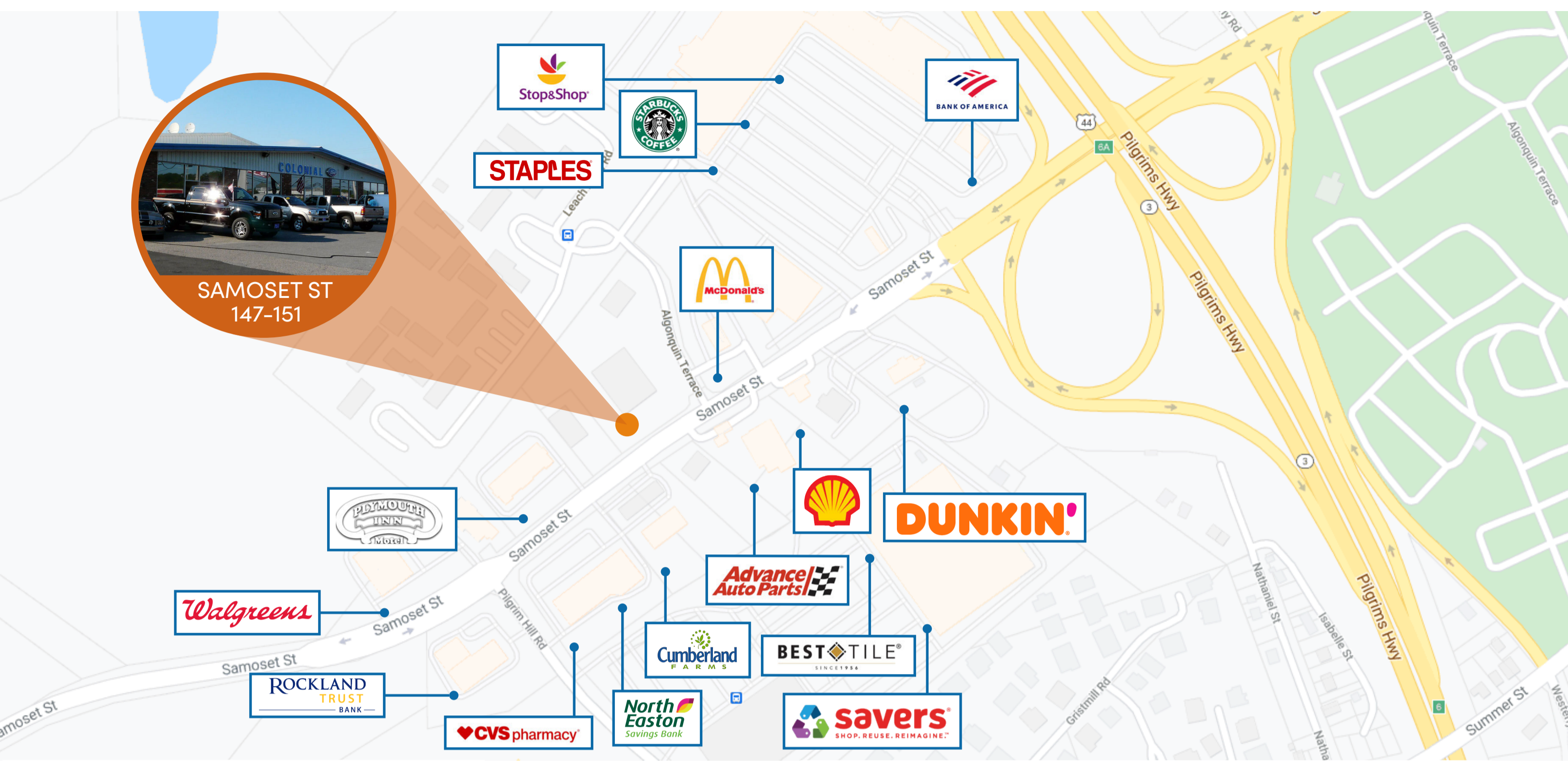
Plymouth, MA



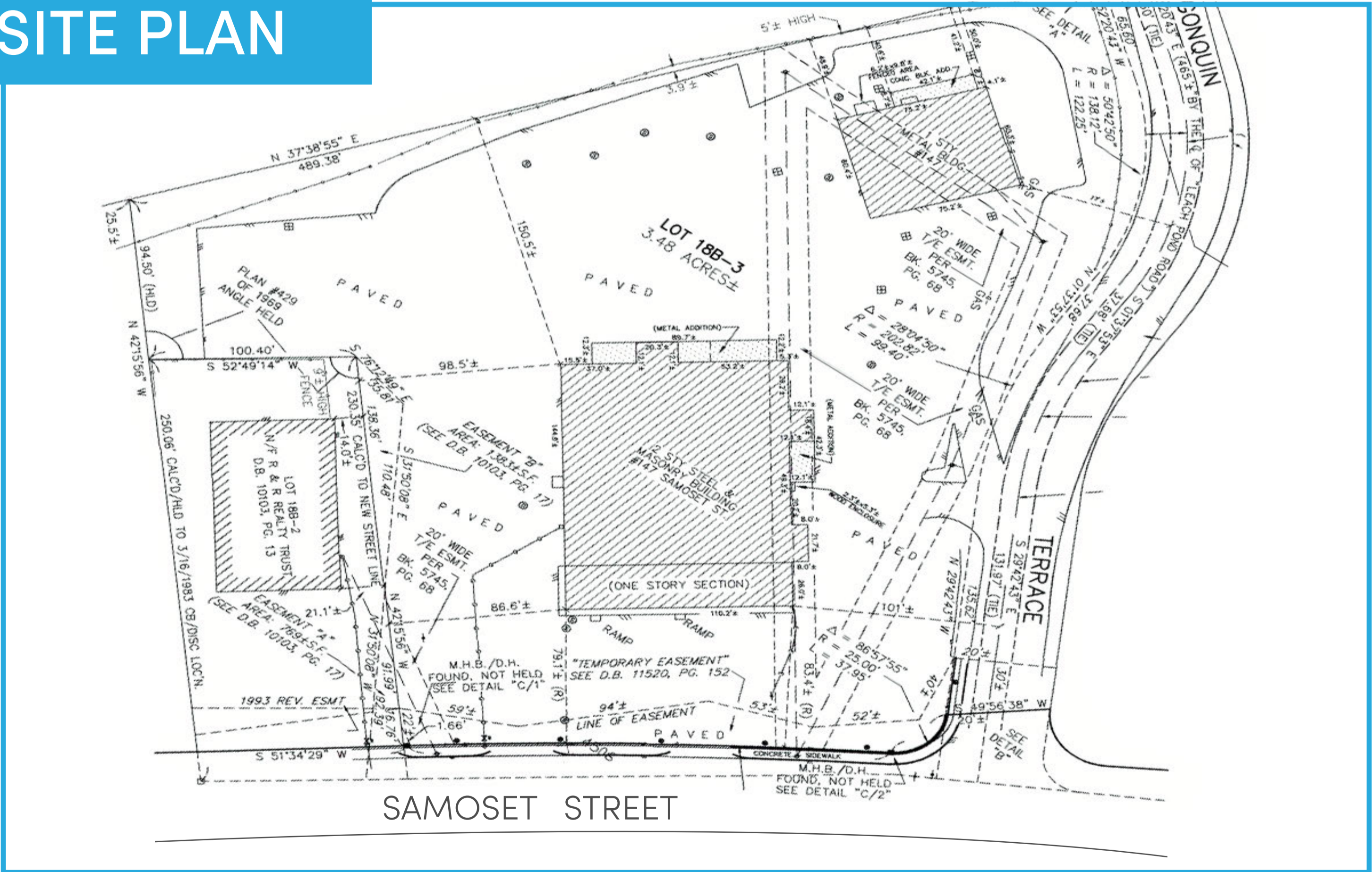
## HIGHLIGHTS

- Pylon Signage
- Traffic Count 32,793 Vehicles per Day
- Highly Visible Location
- Routes 44 & 3
- Ample off street parking

Strategically located former automotive dealerships & auto-body shop facility available for lease. Situated on a heavy vehicle trafficked street with easy access to Routes 44 & 3, surrounded by many national and regional retailers. The site contains three separate buildings on four acres of land. There are two former showroom/service buildings which have drive in doors and car lifts and one high bay auto-body shop, with three large drive in doors with lifts. Tremendous frontage and retail exposure make this property an excellent opportunity for a variety of commercial uses to thrive.



# SITE PLAN



Alisa King | c. 646.676.0044 | [aking@abgrealty.com](mailto:aking@abgrealty.com)  
 Bernard Gibbons | c. 617.212.1369 | [bernard@abgrealty.com](mailto:bernard@abgrealty.com)

\*All rights reserved. The information contained here has been obtained through sources deemed reliable but cannot be guaranteed as to its accuracy. Any information of special interest should be obtained through independent verification.