



OFFICE SPACE FOR SALE OR LEASE | 628 SF

872 | MASS AVE

CAMBRIDGE, MA

872 Mass Ave | Cambridge

PROPERTY HIGHLIGHTS

628 SF OFFICE SPACE



2 PRIVATE OFFICES



KITCHENETTE



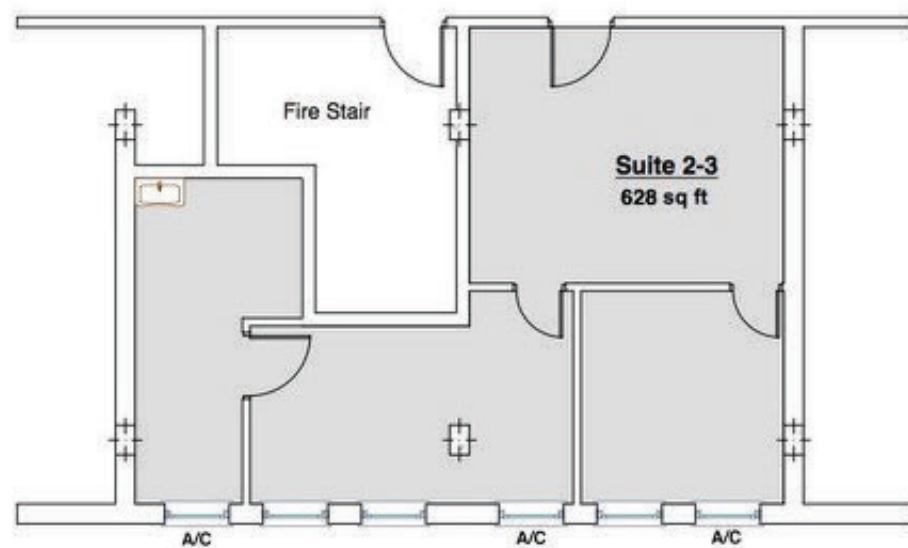
ONSITE PARKING



872 Mass Ave | Cambridge

PROPERTY DESCRIPTION

872 Mass Ave Cambridge Co-Op is ideally located between Harvard Square and Central Square with access to both Harvard University and MIT. Suite 2-3 provides for an open layout with 2 private offices and a Kitchenette. This a great opportunity for a business owner or investor to own commercial space in the growing Cambridge Market. Situated walking distance to the MBTA Red Line as well as access to area amenities. Highest and best uses for the space are Therapist, Attorney, Architect, Tech Firm, or any professional business. Onsite parking spaces are available for lease or purchase.





HARVARD
UNIVERSITY

HARVARD SQUARE

T Central Square



dado
THE PLOUGH
AND STARS



BOSTON
Burger Company



WAYPOINT
DUNKIN'
Sakana
Sushi

872 MASSACHUSETTS AVE ★



UNITED STATES
POSTAL SERVICE



BANK OF AMERICA
1369
7-ELEVEN
Citizens



Cicada



Walgreens
CAFFÈ NERO
STARBUCKS COFFEE
TD Bank
Eastern Bank

Central Square T

CENTRAL SQUARE



Bertucci's
BRICK OVEN PIZZA & PASTA

Kendall/MIT T



WHOLE FOODS
MARKET
Walgreens



CVS
CHIPOTLE
MEXICAN GRILL



Viale
THE MIDDLE EAST
RESTAURANT AND NIGHTCLUB
clover food lab



Massachusetts
Institute of
Technology

Massachusetts
Institute of
Technology

872
Mass Ave
Cambridge,
MA 02139



Stephanie Deering | c. 781-608-5964 | sdeering@abgrealty.com



307 Cambridge Street, Cambridge, MA | 617.492.9900 | www.abgrealty.com
*All rights reserved. The information contained here has been obtained through sources deemed reliable but cannot be guaranteed as to its accuracy. Any information of special interest should be obtained through independent verification.