

# 1000 SF PRIME OFFICE SPACE

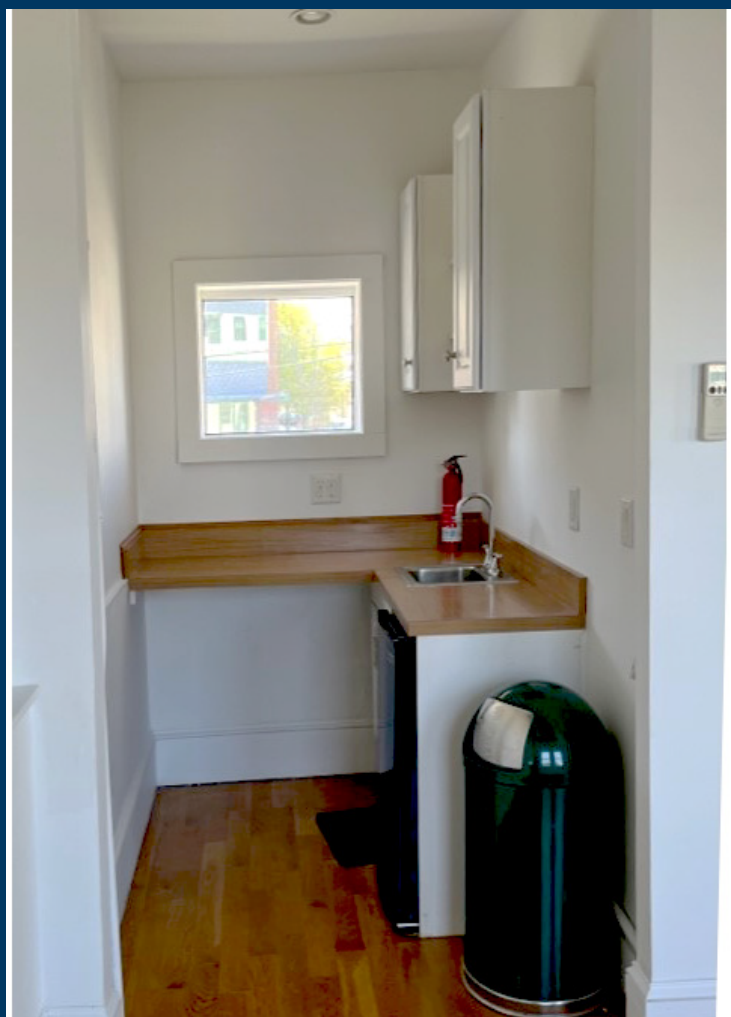


164  
SIDNEY ST,  
CAMBRIDGE

## DESCRIPTION

Premier space in Cambridge on Sidney St right next to Central Square, University Park, and MIT. A completely open standalone office building split between two floors with hardwoods floors, high ceilings and plenty of natural sunlight. The building is walking distance to Red Line Central Square T Stop and area amenities. Perfect for biotech, technology, or any professional business.





### HIGHLIGHTS

- 1000 Stand Alone Office Building
- Walking Distance Red Line T stop
- In Unit Kitchenette



**Stephanie Deering**  
 Vice President  
 781-608-5964  
 sdeering@abgrealty.com

