

FOR SALE

205 & 213 CAMBRIDGE RD | WOBURN, MA

Subject Property

CAMBRIDGE ROAD



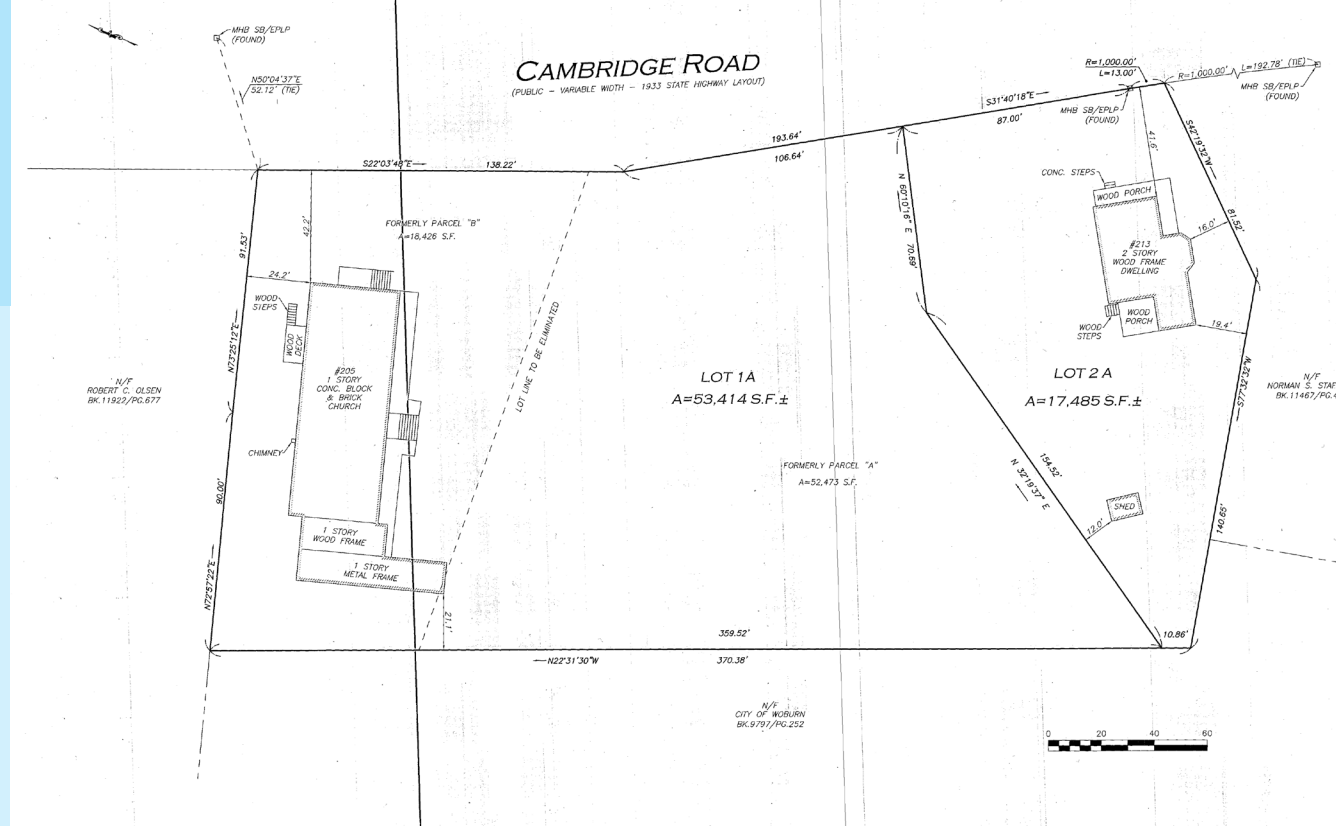
BERNARD GIBBONS
Senior Vice President
617.212.1369
bernard@abgrealty.com

STEPHANIE DEERING
Vice President
781.608.5964
sdeering@abgrealty.com

DAVE KILLEN
Advisor
617.492.9900
dkillen@abgrealty.com

OVERVIEW

Rare opportunity to purchase a former church facility and Single-Family home on 1.6 Acres of land. The building is 7,425 SF seating approximately 150 people and ample Off-Street Parking Spaces. The church has a sanctuary, offices, children's classrooms and a lower-level meeting area. The single family home offers 1720 sf with an additional 536 SF of built out attack space. Located at the well-traveled four corner area of Woburn with restaurants and amities located in the immediate area. The highest and best uses would be Church Facility, Daycare, or Community Center.



PROPERTY HIGHLIGHTS

205 Cambridge Rd



7,425 SF Building



1.23 Acres of Land



70+ Parking Spaces



R-1 Zoning



PROPERTY HIGHLIGHTS

213 Cambridge Rd



1720 SF Single Family Home



536 SF Finished Attic



.41 Acres of Land



R-1 Zoning



AREA AMENITIES AND BUSINESS



BERNARD GIBBONS
Senior Vice President
617.212.1368
bernard@abgrealty.com

STEPHANIE DEERING
Vice President
781.608.5964
sdeering@abgrealty.com

DAVE KILLEN
Advisor
617.492.9900
dkillen@abgrealty.com

