

ORCHARD SQUARE | 355 Littleton Rd | Westford, MA

NEIGHBORHOOD RETAIL SHOPPING CENTER

END CAP AND IN LINE UNIT SPACES FOR LEASE



307 Cambridge Street Cambridge, MA 02141

BERNARD GIBBONS

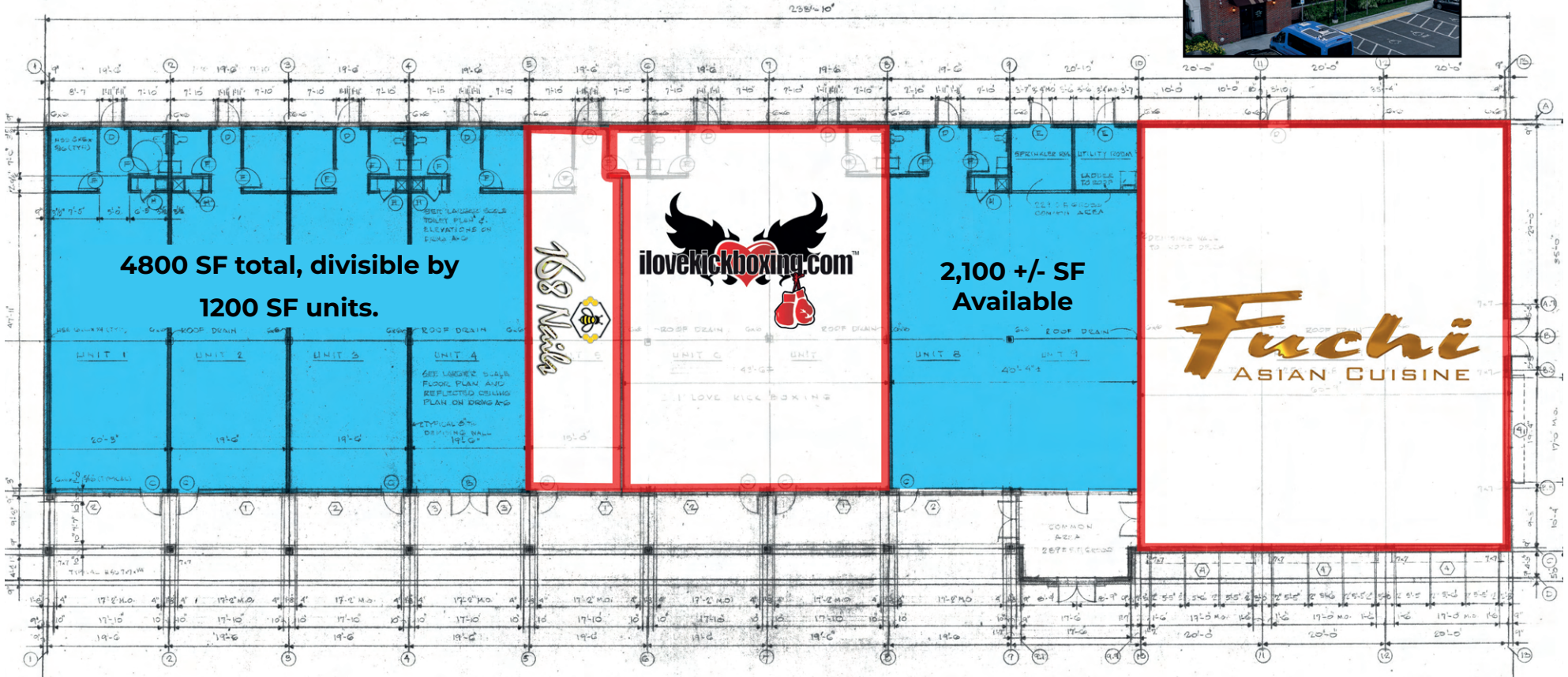
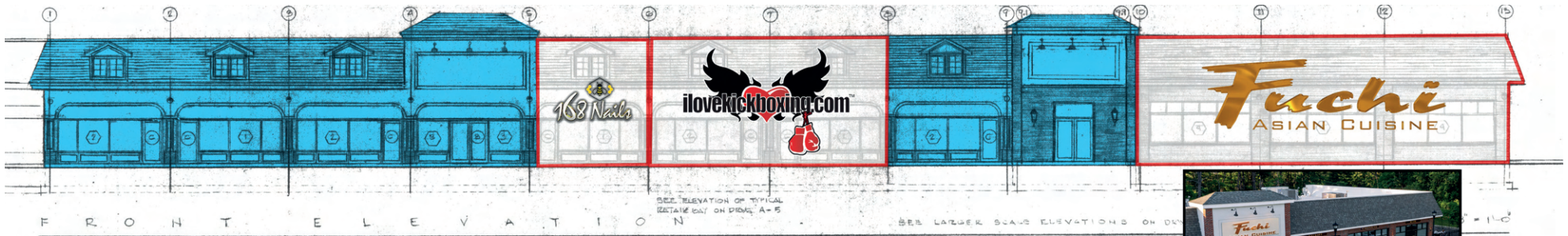
617.212.1369

bernard@abgrealty.com

EXECUTIVE SUMMARY

Orchard Sq is a newly constructed Neighborhood Retail Shopping Center. Attractive architecture, landscaping and hardscape, ample parking, a freestanding drive through, lunch and dinner time boosts in foot traffic from Fuchi's Asian Cuisine, and excellent visibility from Littleton Rd make this Center an attractive opportunity for any retail or service business.





PROPERTY HIGHLIGHTS

- New Construction
- Attractive Hardscape
- Pylon Signage
- End Cap, and In Line Units Available
- Ample Parking

POINTS OF INTEREST



CVS pharmacy
WHOLE FOODS MARKET
ocho.cafe
Hampton by Hilton
SEoul KITCHEN
NT
UTC Aerospace Systems

FIVE GUYS
Panera BREAD
MARKET BASKET
Marshalls
Walgreens
petco
BANK OF AMERICA

goldfish swimschool
Residence
ACE Hardware
WESTFORD REGENCY
STIR
Ninety Nine RESTAURANT & PUB
HONDA
NETSCOUT

KIMBALL FARM
CVS pharmacy
SULLIVAN AND AUTO SERVICE
TIRE SERVICE

MARKET BASKET COURTYARD BY MARRIOTT
MOE'S southwest grill



DEMOGRAPHICS
(5 mile radius)

Population	53,755
Households	19,556
Average Household Income	\$204,807

AREA HIGHLIGHTS

- Money Magazine listed Westford as the #11 "Best Place to Live in America"
- Traffic Count: 13,300 VPD
- 35 miles to Boston